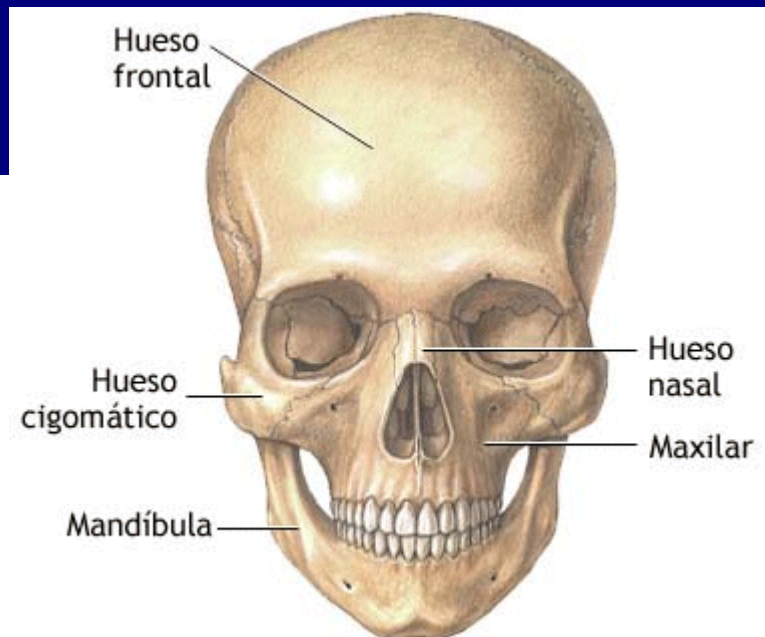


CABEZA

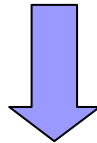


Dra. Ana V. Naranjo

CABEZA

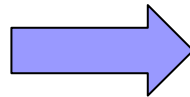
- Se apoya en extremo superior de columna vertebral

- 22 huesos



CRÁNEO: 8 HUESOS

- FRONTAL
- PARIETALES
- TEMPORALES
- OCCIPITAL
- ETMOIDES
- ESFEMOIDES

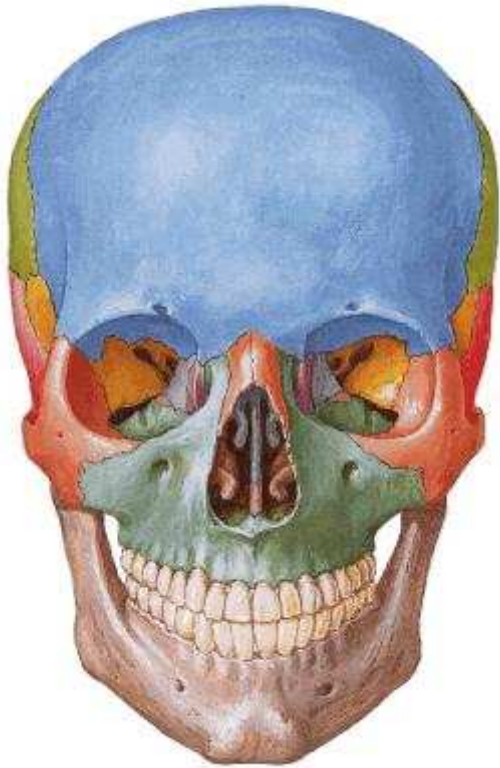


CARA: 14 HUESOS

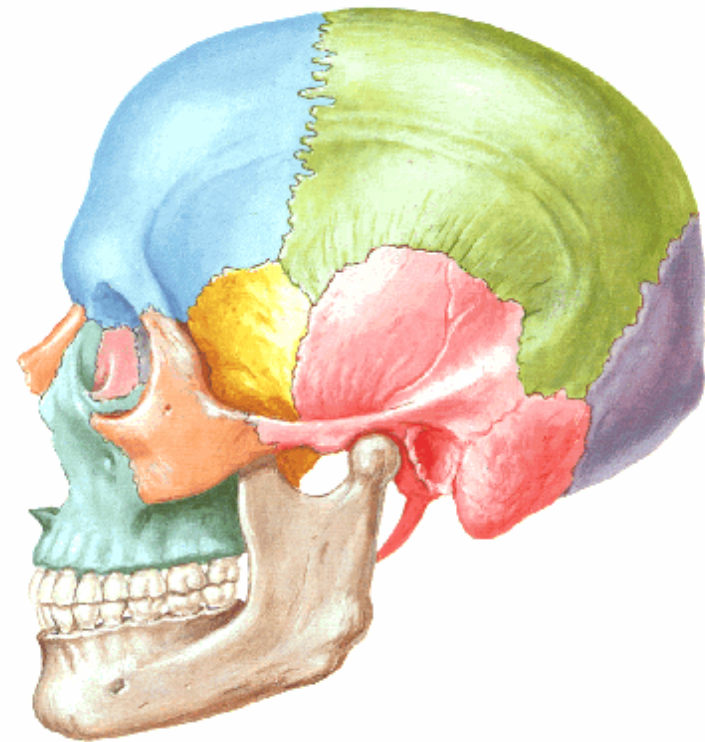
- NASALES
- MAXILARES SUPERIORES
- CIGOMÁTICOS
- MAXILAR INFERIOR
- LAGIRMALES
- PALATINOS
- CORNETES INFERIORES
- VÓMER



CABEZA



VISTA ANTERIOR



VISTA LATERAL

Dra. Ana V. Naranjo



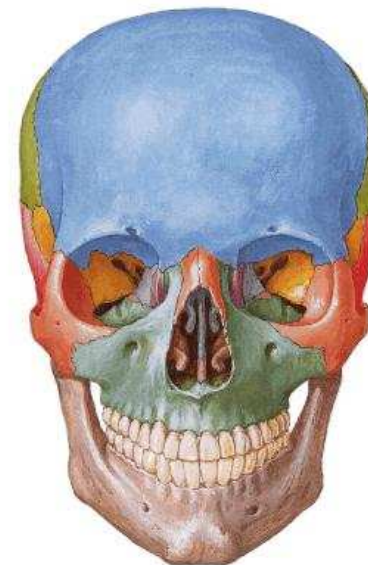
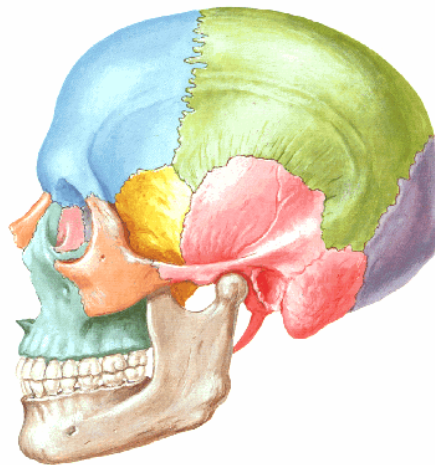
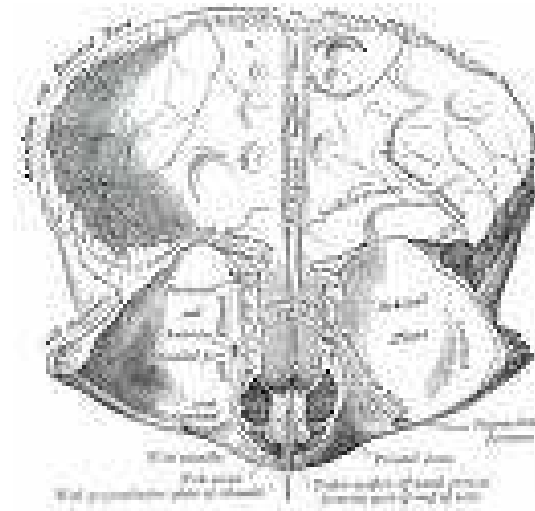
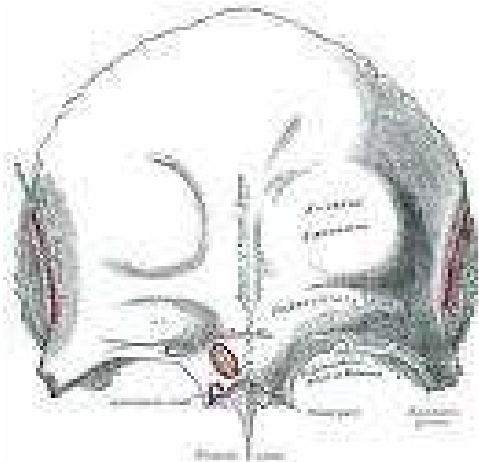
HUESOS DEL CRÁNEO



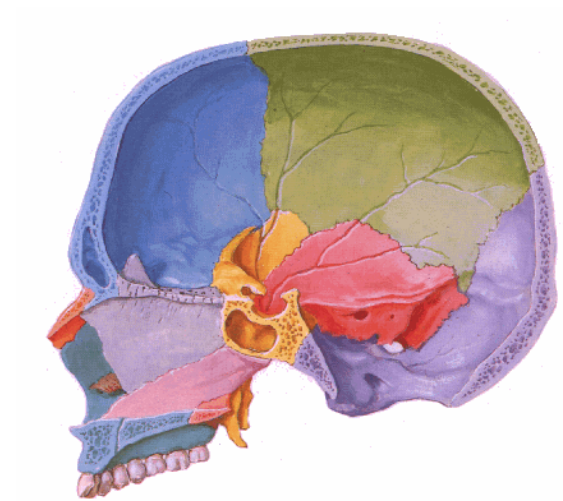
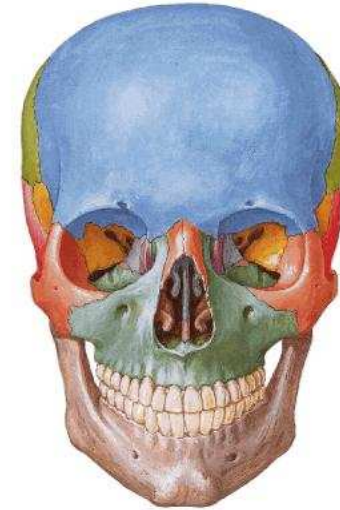
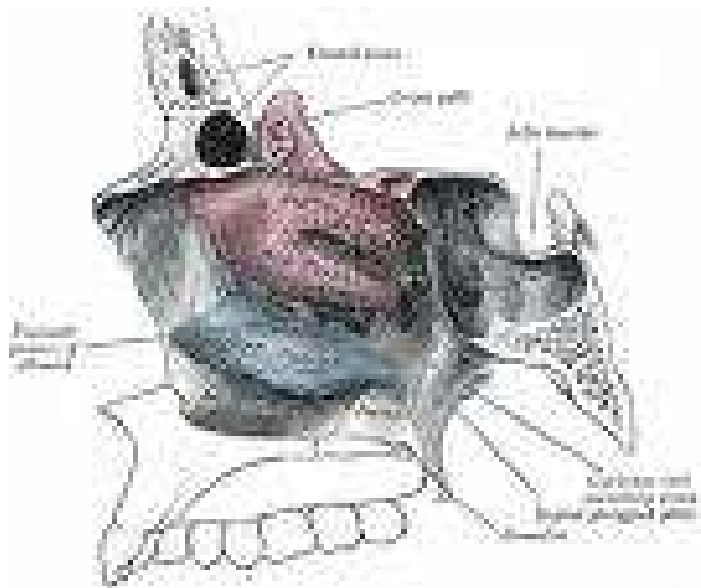
CRÁNEO

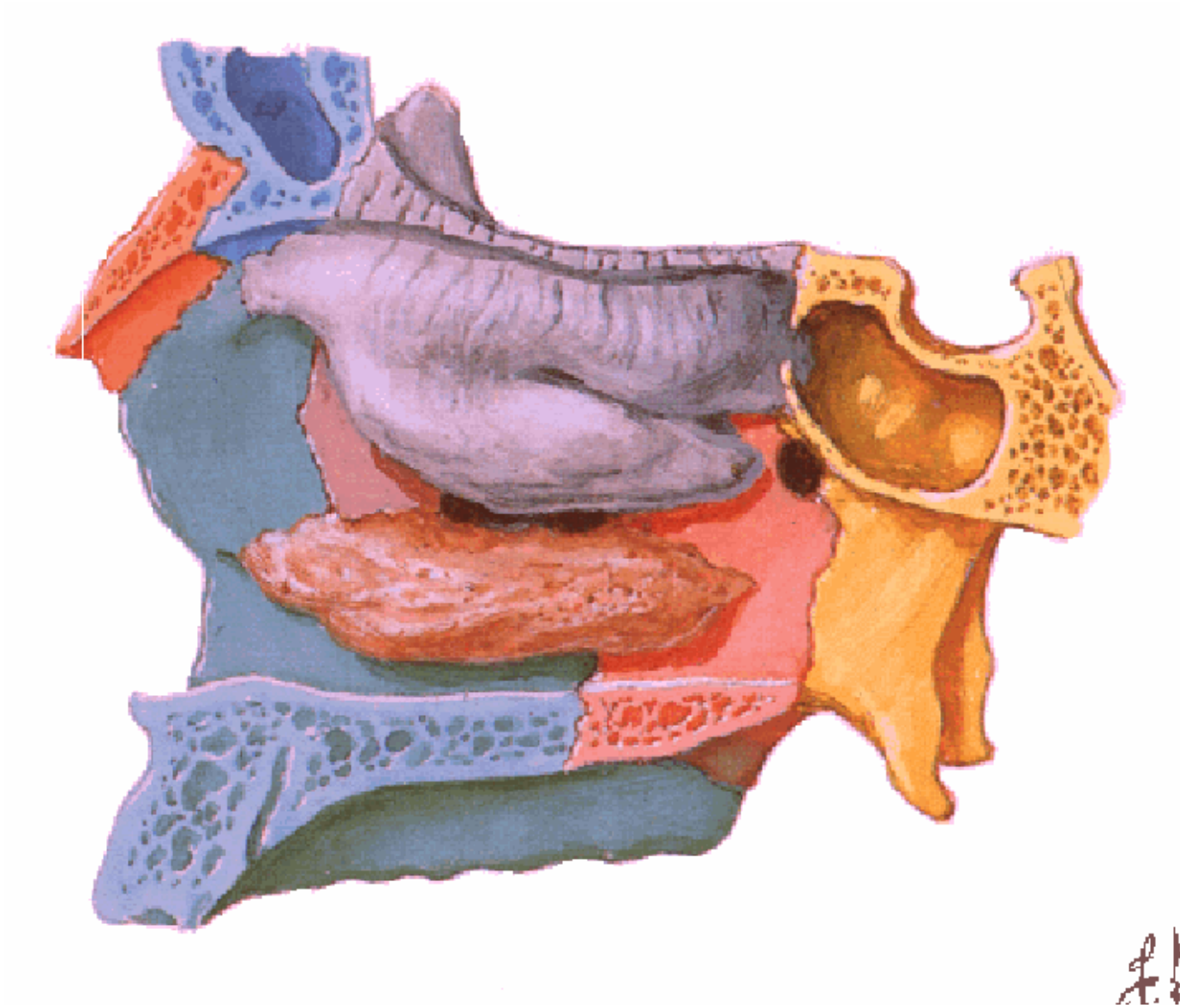
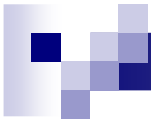
- Cavity craneal protege al encéfalo
- Fosas nasales y órbitas
- Senos paranasales
- Sentidos de audición y equilibrio
- Articulaciones inmóviles: suturas
- Inserción de meninges en superficie interna
- Inserción muscular en superficie externa
- Sostén y protección a órganos de los sentidos

FRONTAL

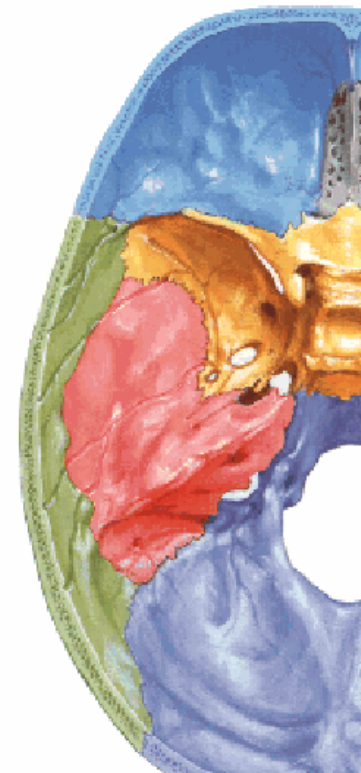
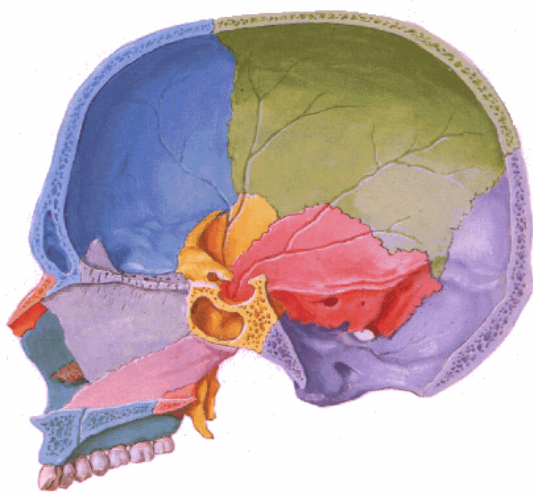
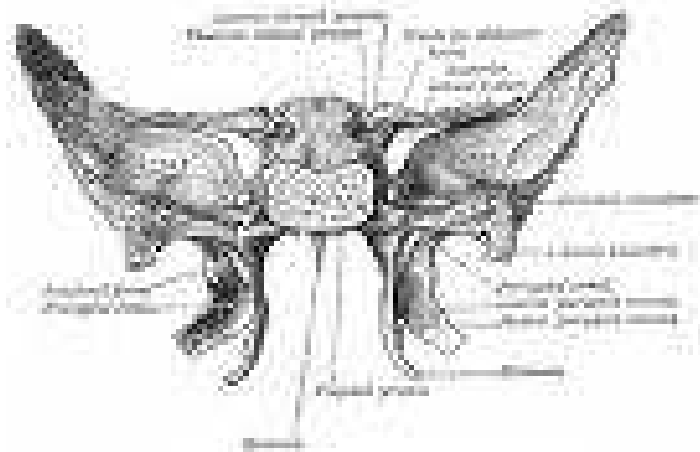


ETMOIDES

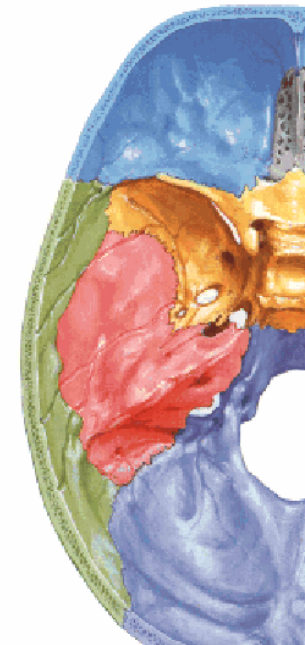
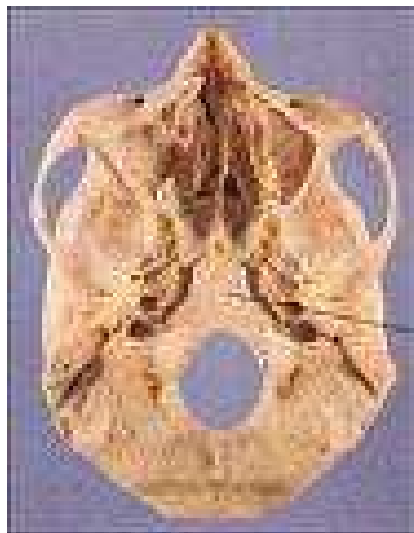
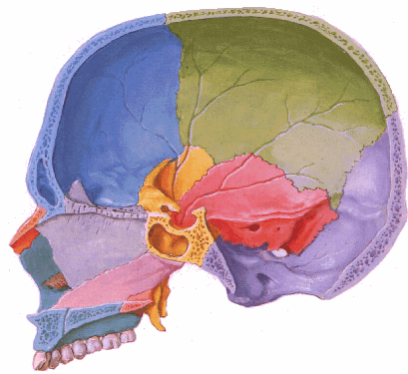




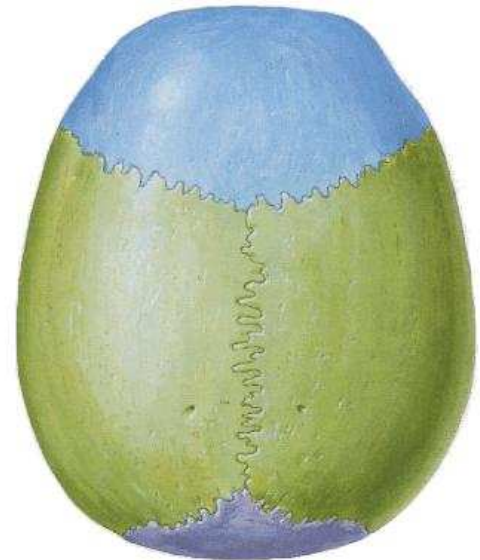
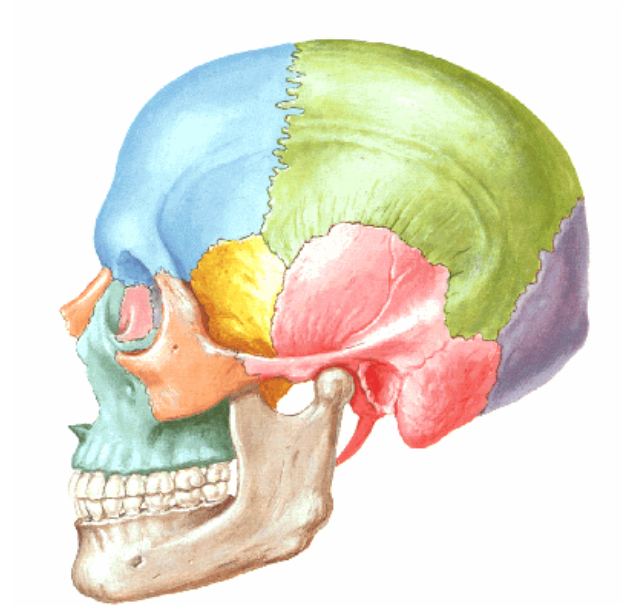
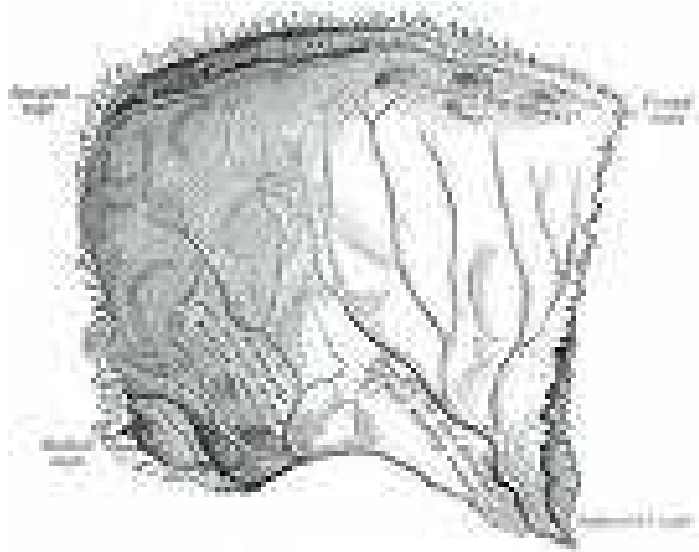
ESFENOIDES



OCCIPITAL



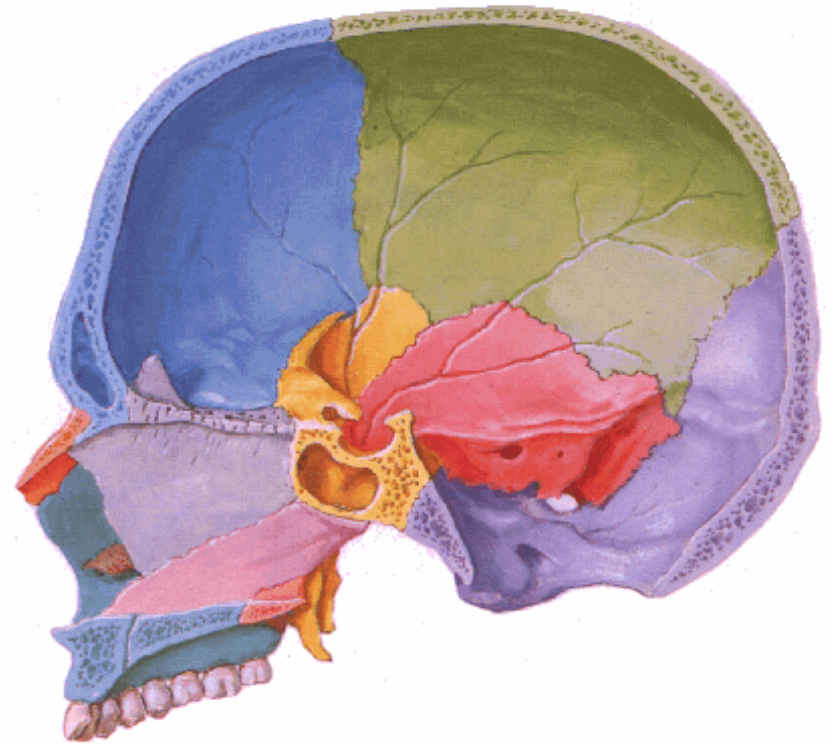
PARIETALES



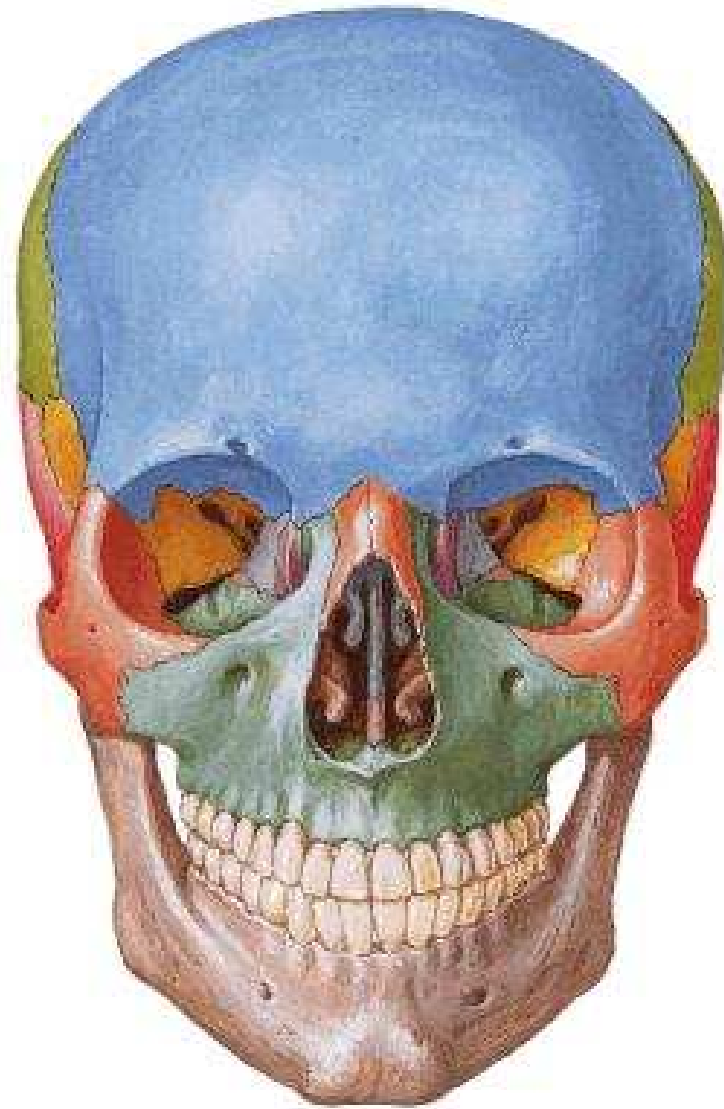
HUESOS DEL CRÁNEO



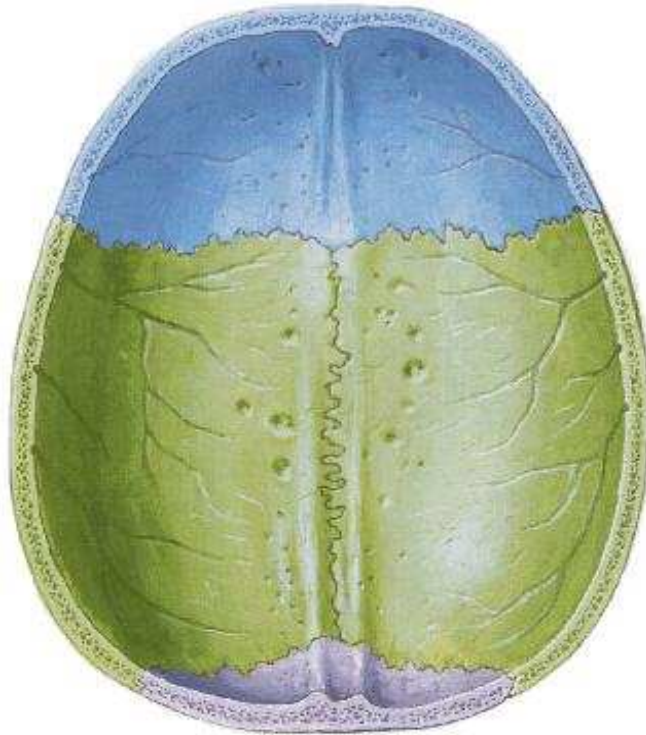
Vista lateral



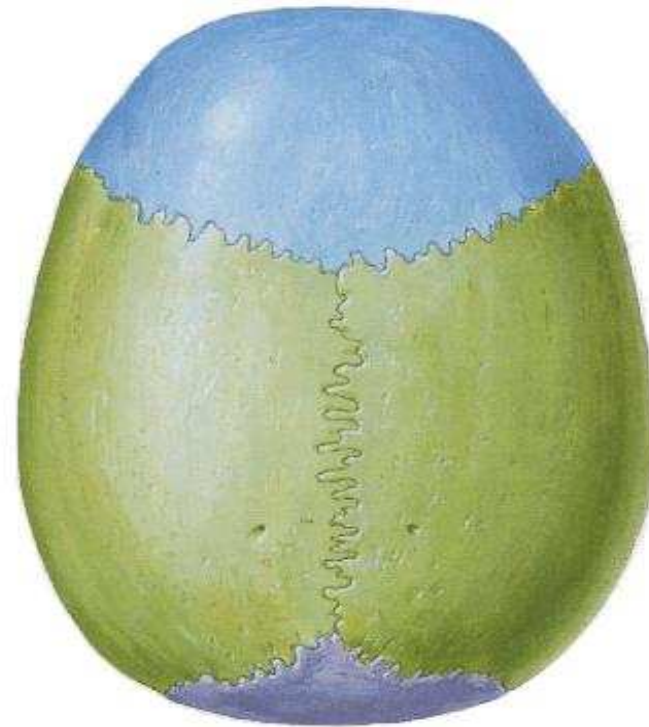
Corte sagital



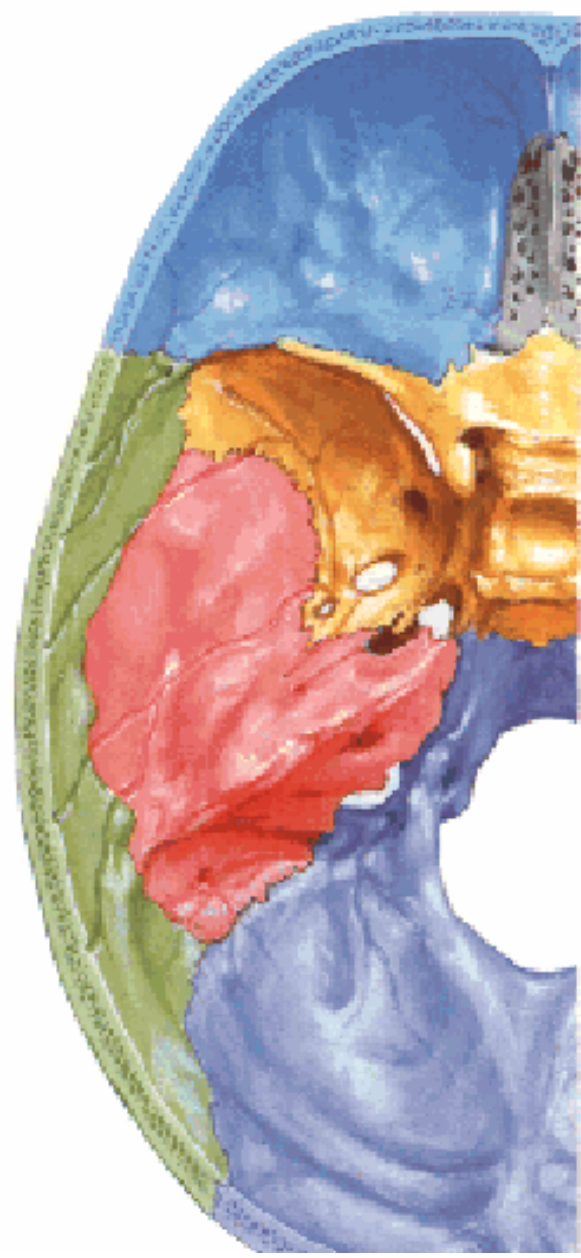
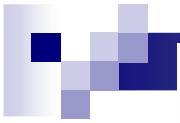
Calota craneal



Vista Interna



Vista externa

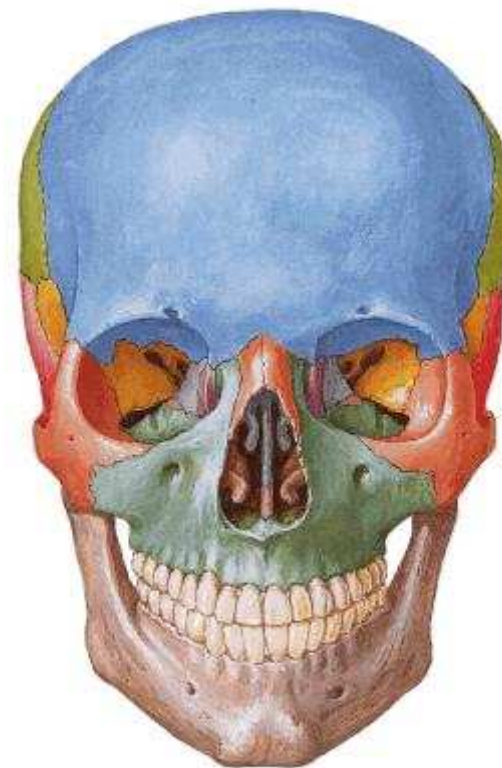
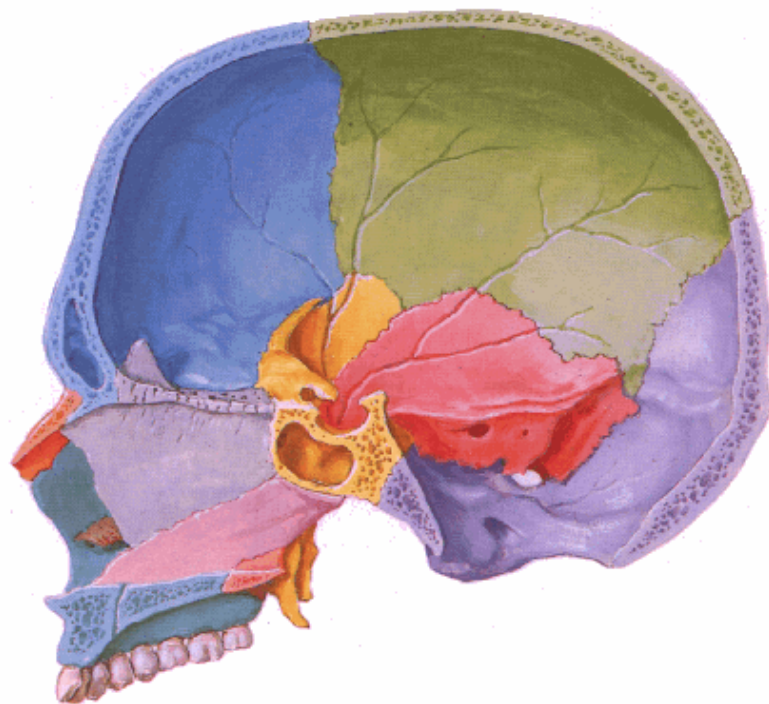


Dra. Ana V. Naranjo

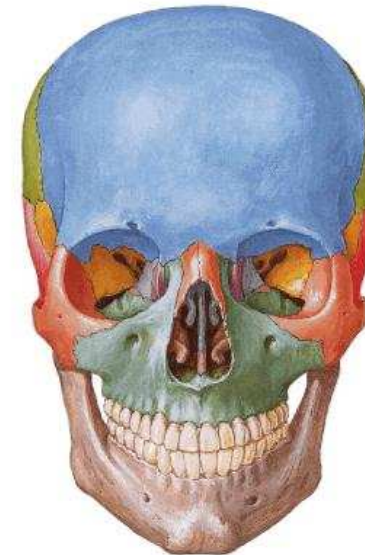
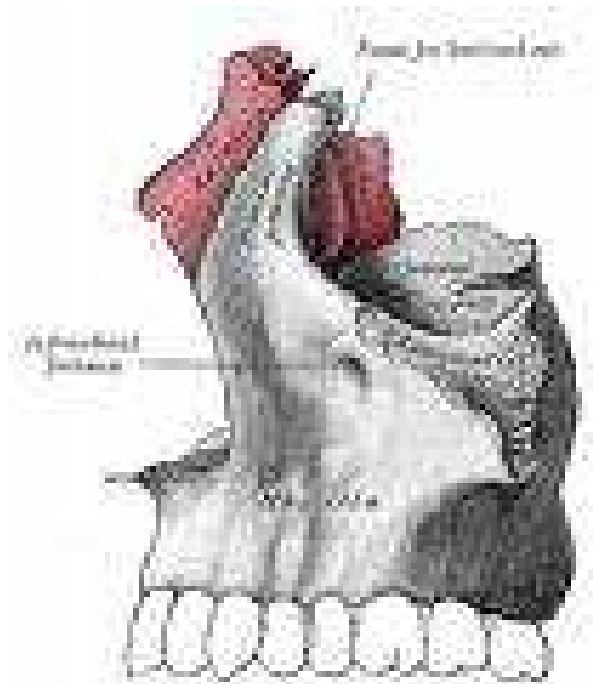


HUESOS DE LA CARA

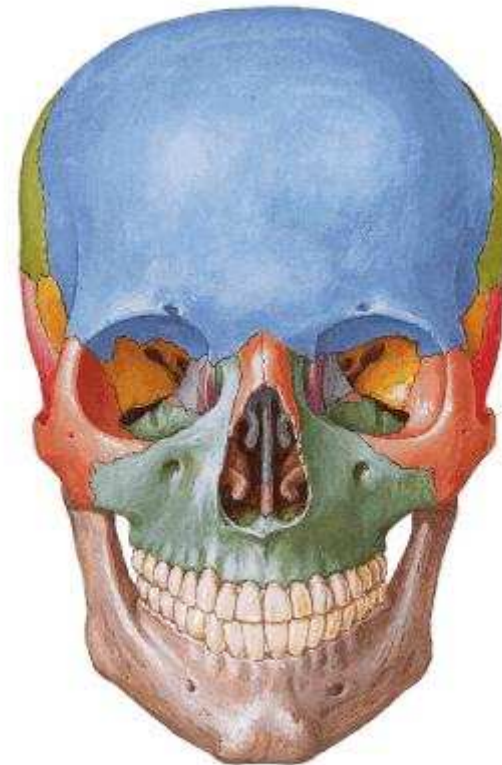
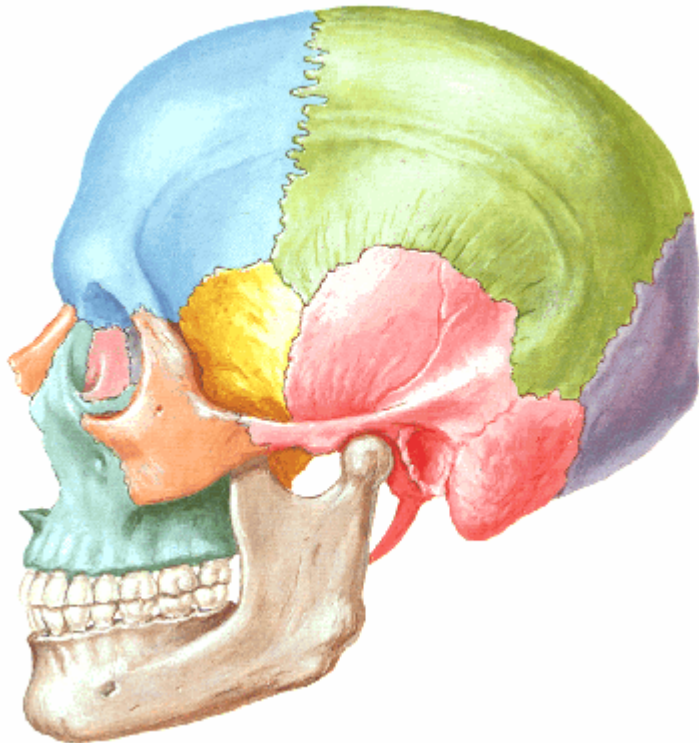
HUESOS NASALES



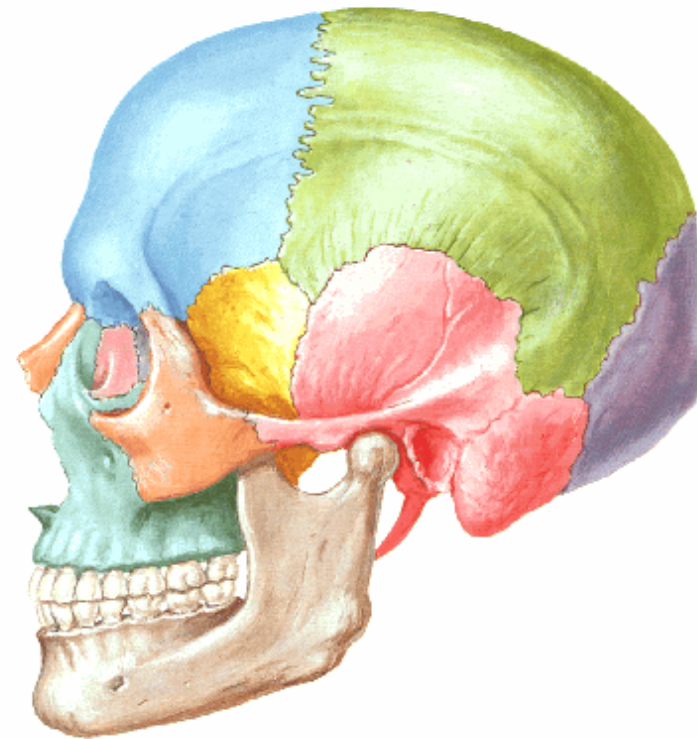
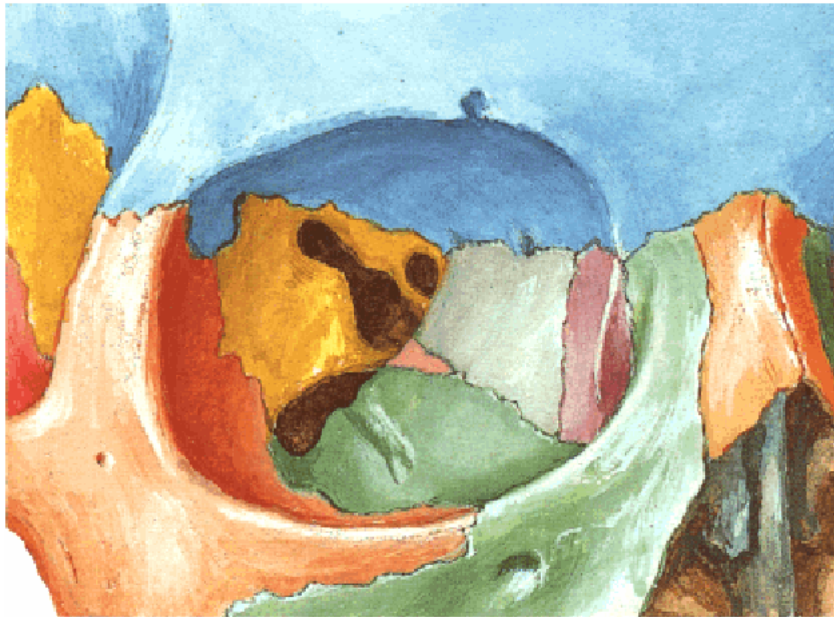
MAXILARES SUPERIORES



HUESOS CIGOMATICOS O MALARES



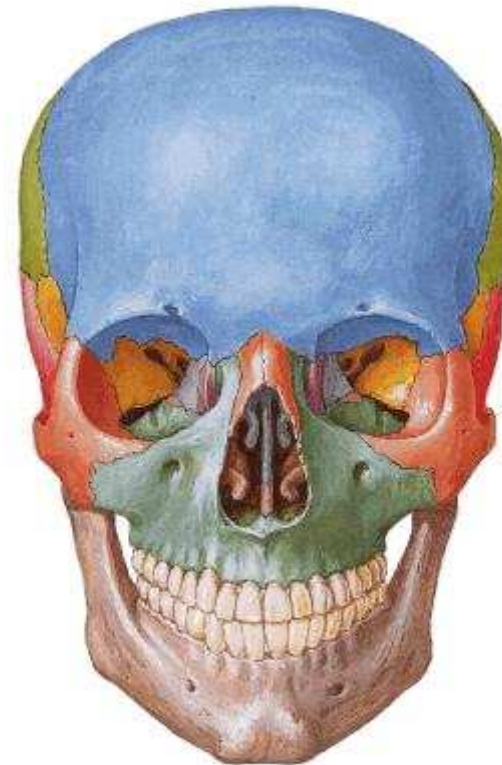
LAGRIMALES



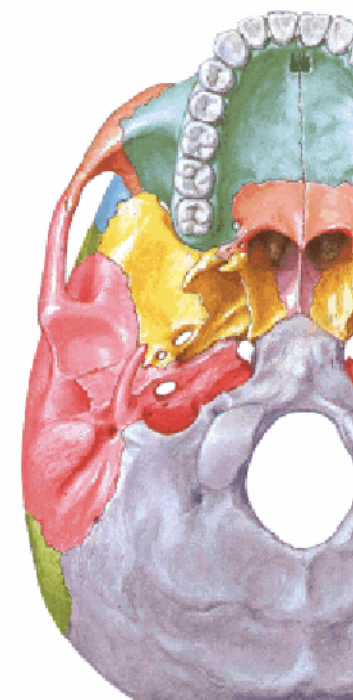
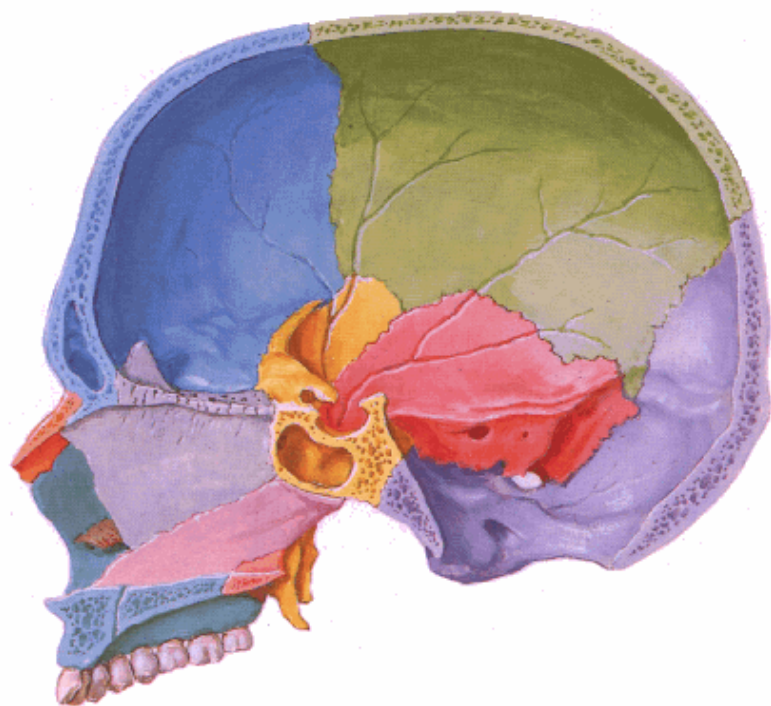
PALATINOS



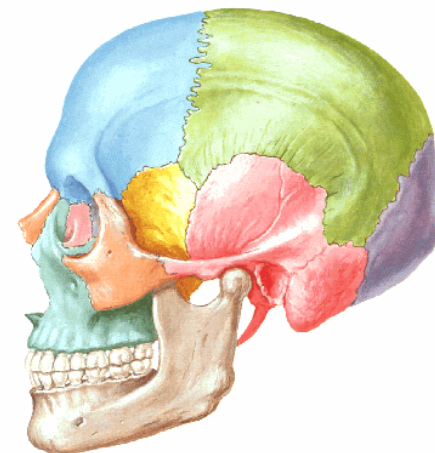
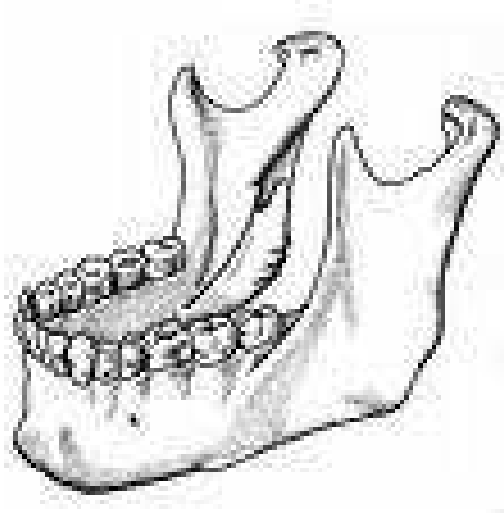
CORNETES INFERIORES O CONCHAS NASALES INFERIORES



VOMER

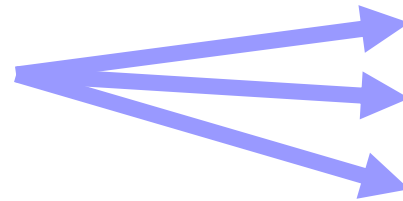


MAXILAR INFERIOR



ARTICULACIONES

- **SUTURAS DENTADAS**



- Coronal
- Sagital
- Lambdoidea

- **ESCAMOSA**



- Temporoparietal

- **ESQUINDELESI**



- Vómer y Esfenoides

- **PLANA**



- Huesos Nasales



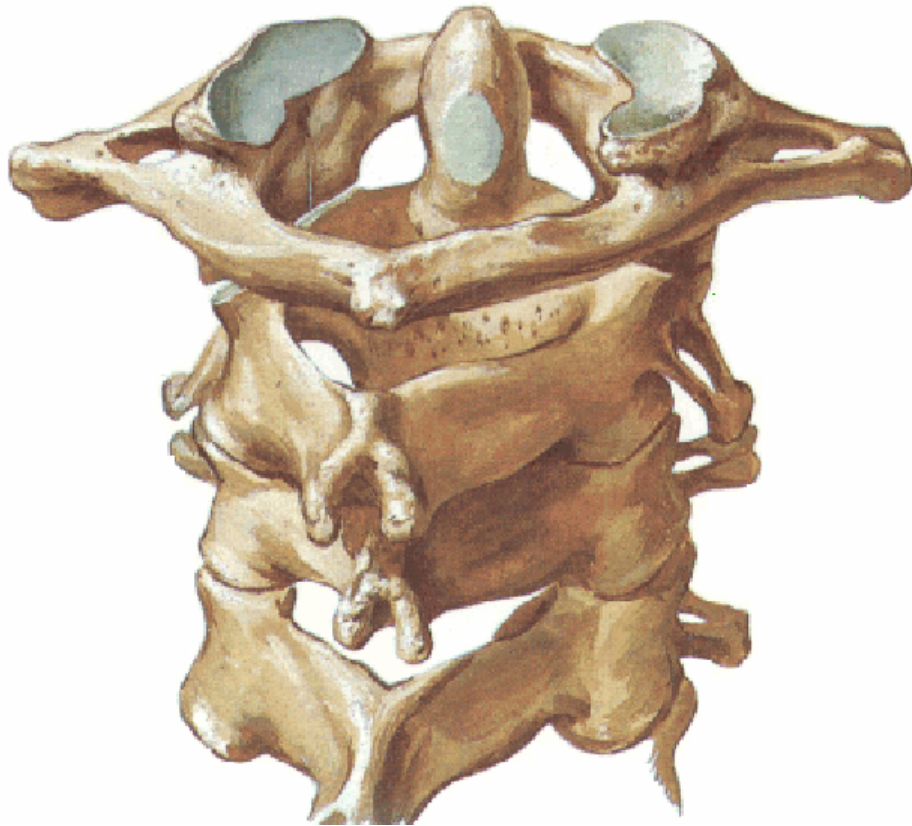
Articulaciones sinoviales del cráneo

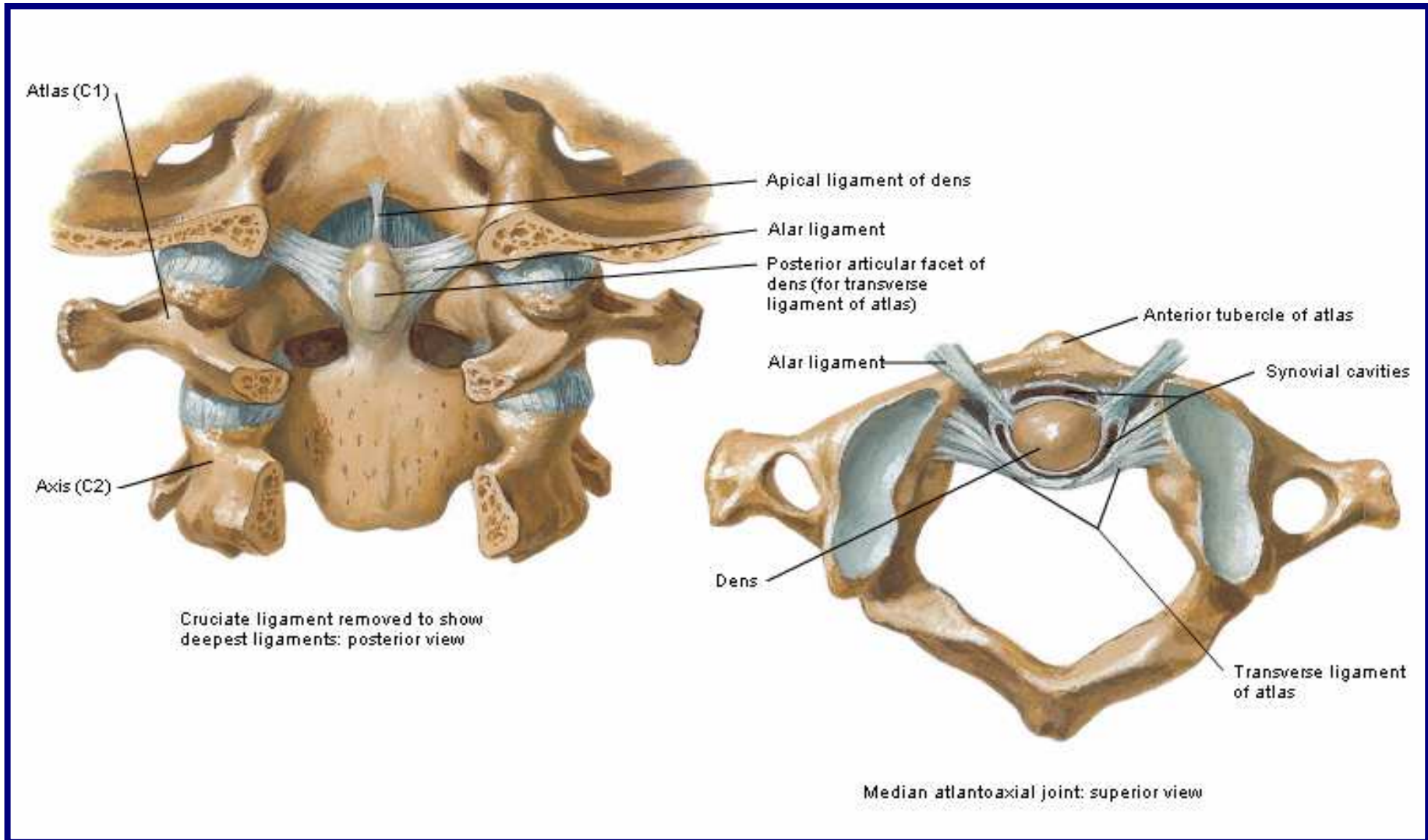
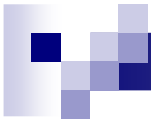
- Atlantooccipital

- Atloidoaxoidea

- Temporomaxilar

Articulación atloidooodontoidea

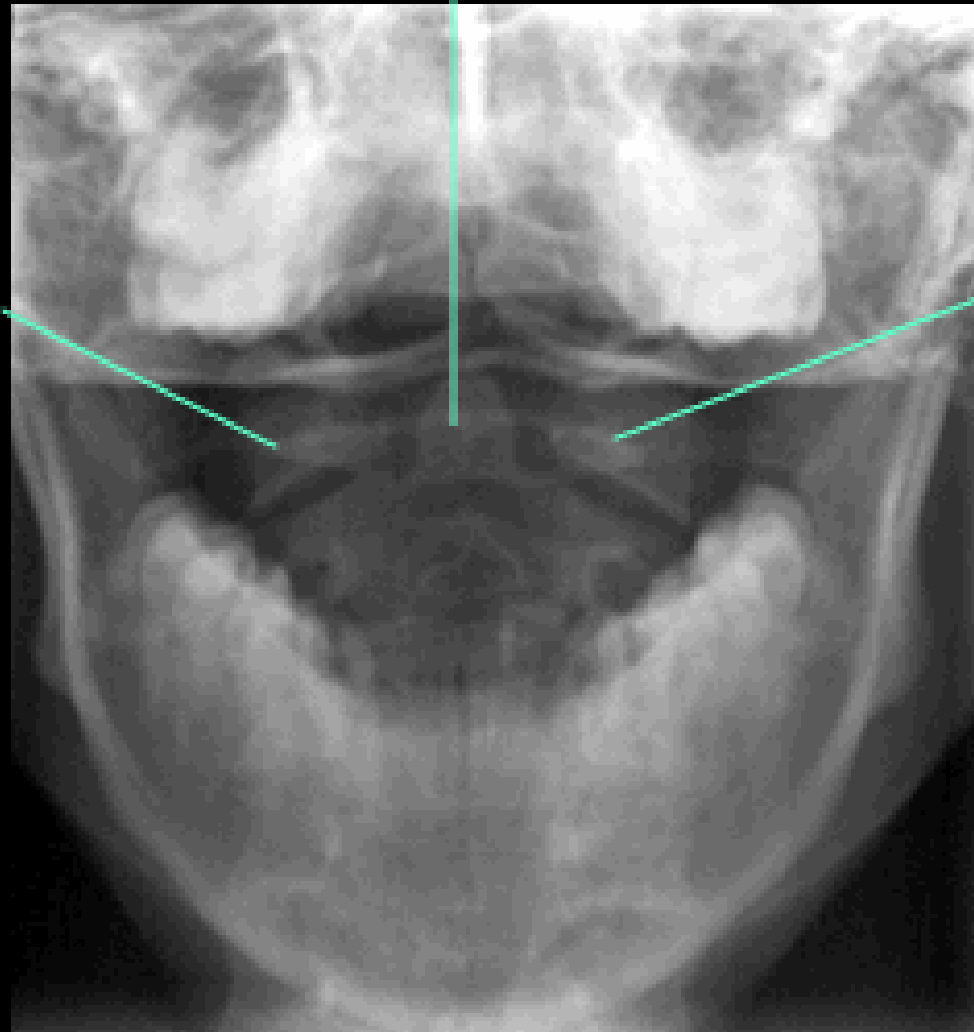




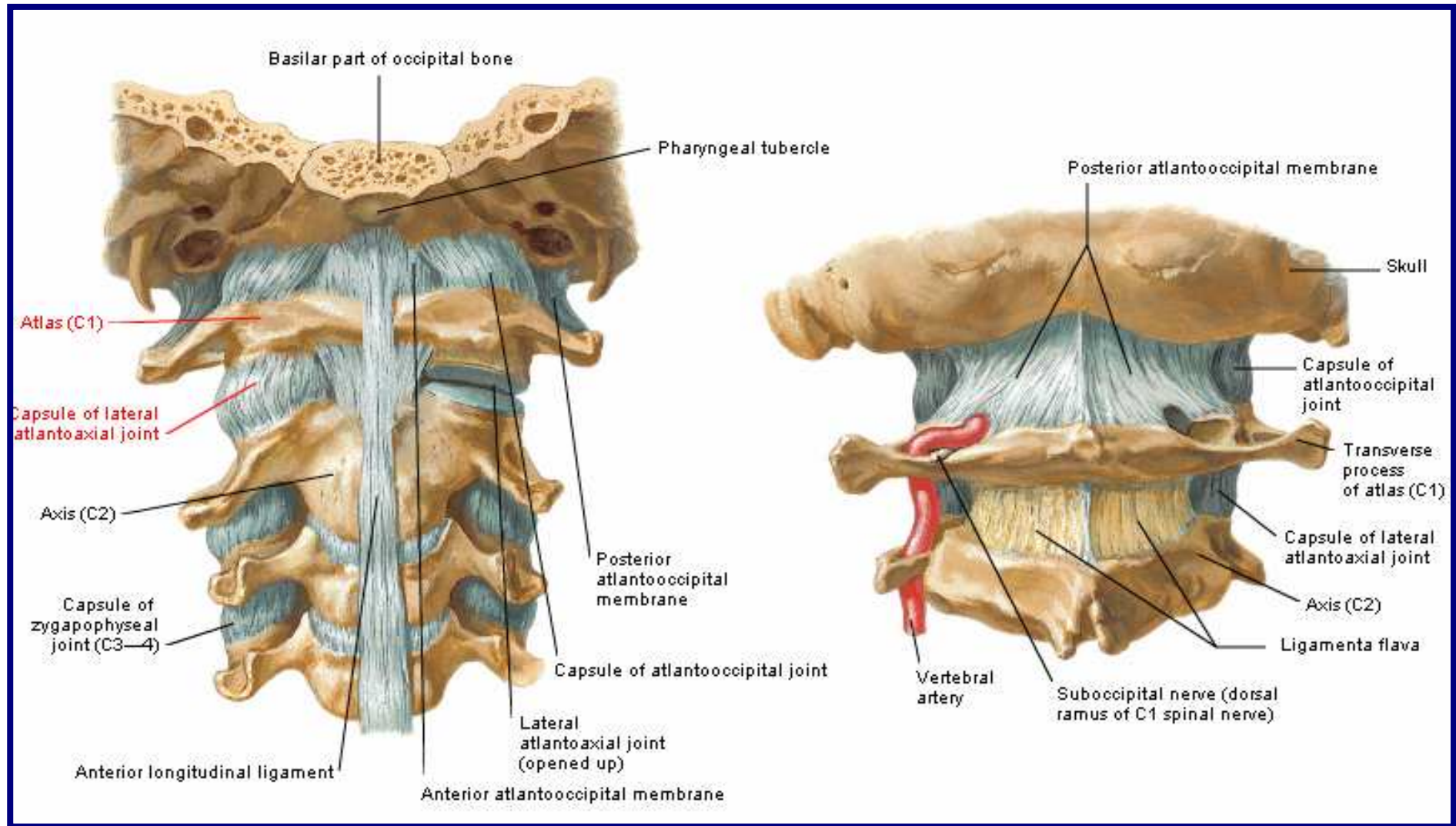
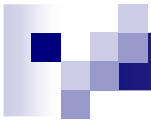


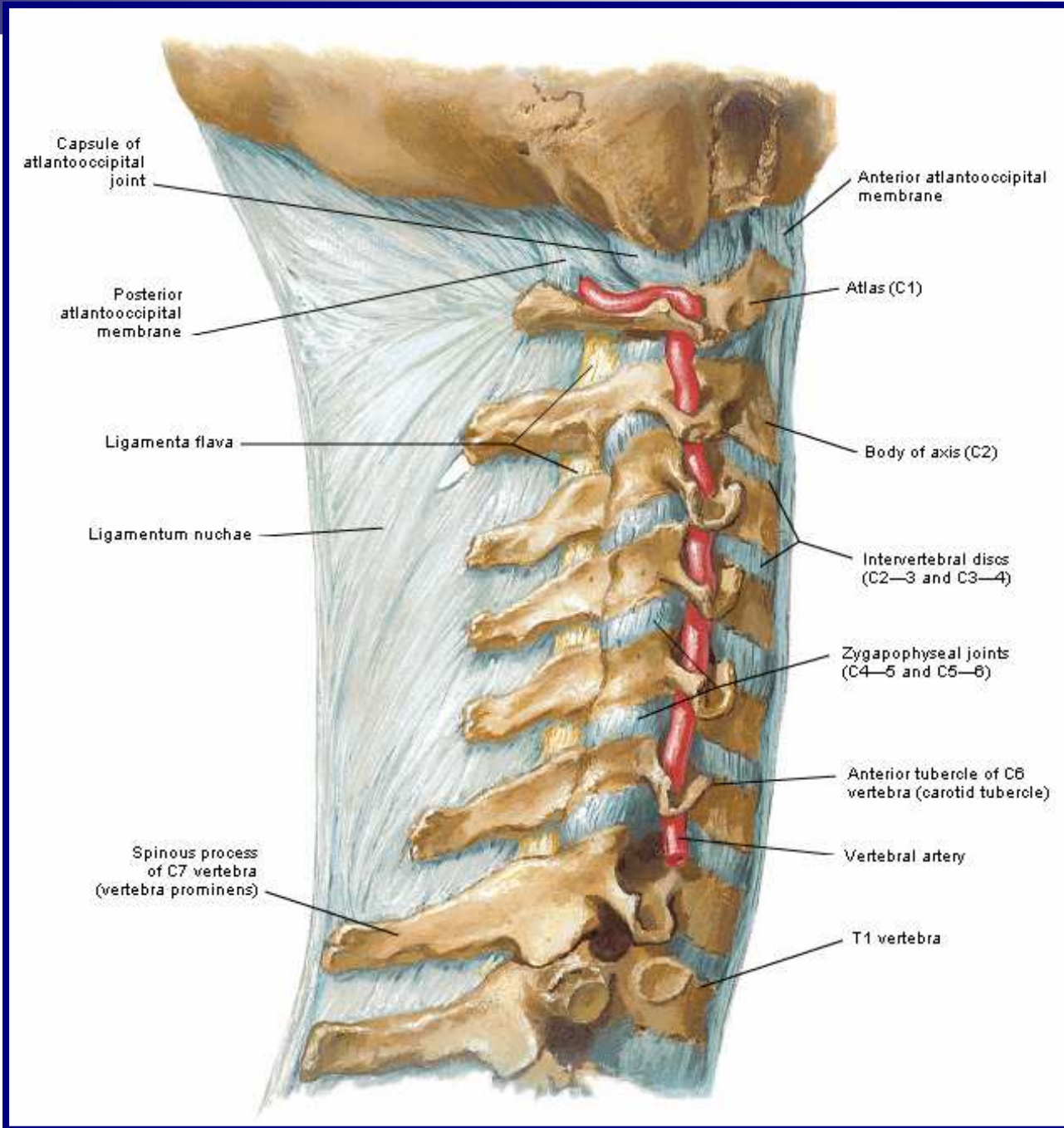
Dens of axis (C2 vertebra)

Lateral mass of atlas
(C1 vertebra)

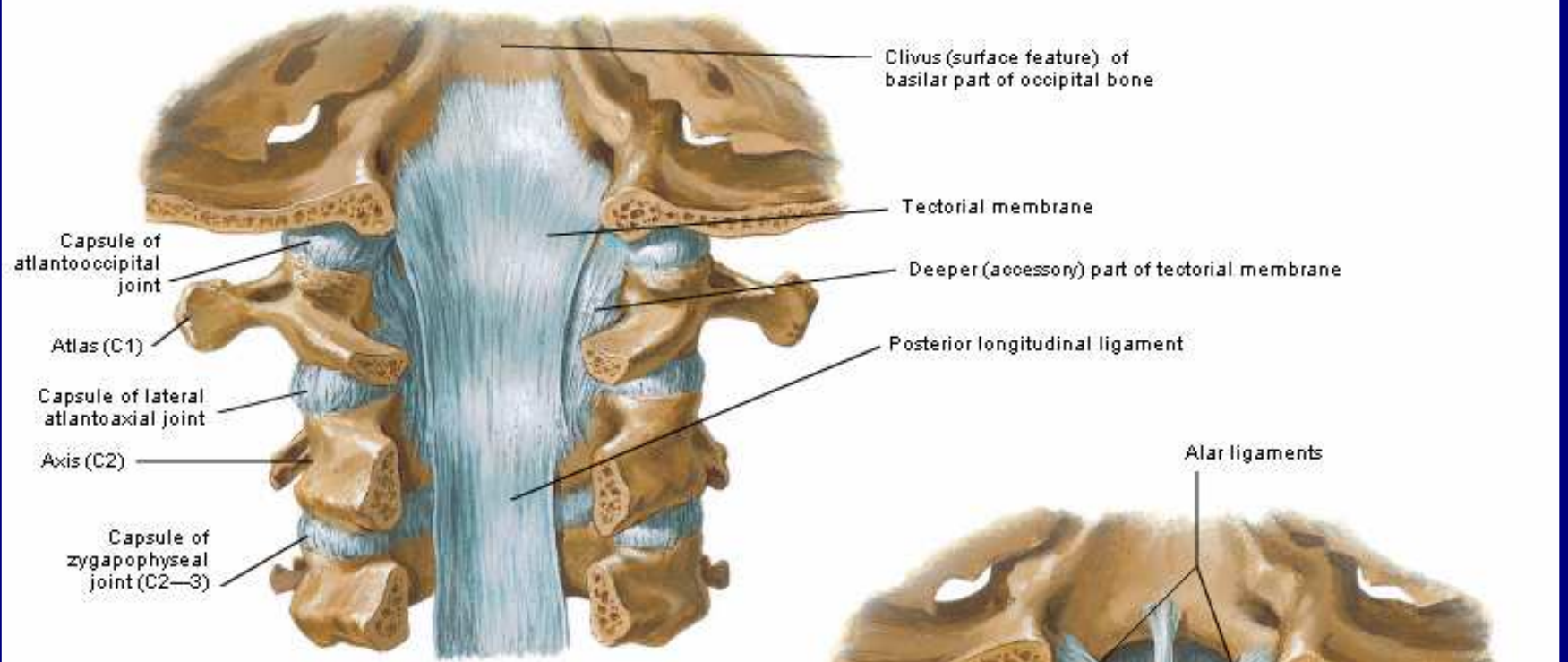


Lateral mass of atlas
(C1 vertebra)





Upper part of vertebral canal with spinous processes and parts of vertebral arches removed to expose ligaments on posterior vertebral bodies: posterior view



Clivus (surface feature) of basilar part of occipital bone

Tectorial membrane

Capsule of atlantooccipital joint

Deeper (accessory) part of tectorial membrane

Atlas (C1)

Posterior longitudinal ligament

Capsule of lateral atlantoaxial joint

Axis (C2)

Capsule of zygapophyseal joint (C2—3)

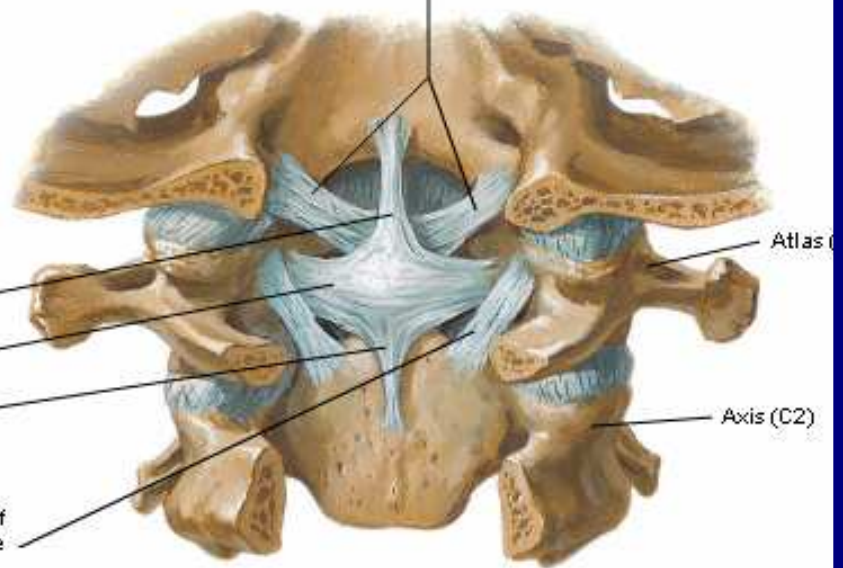
Alar ligaments

Superior longitudinal band (part of cruciate ligament)

Transverse ligament of atlas (part of cruciate ligament)

Inferior longitudinal band (part of cruciate ligament)

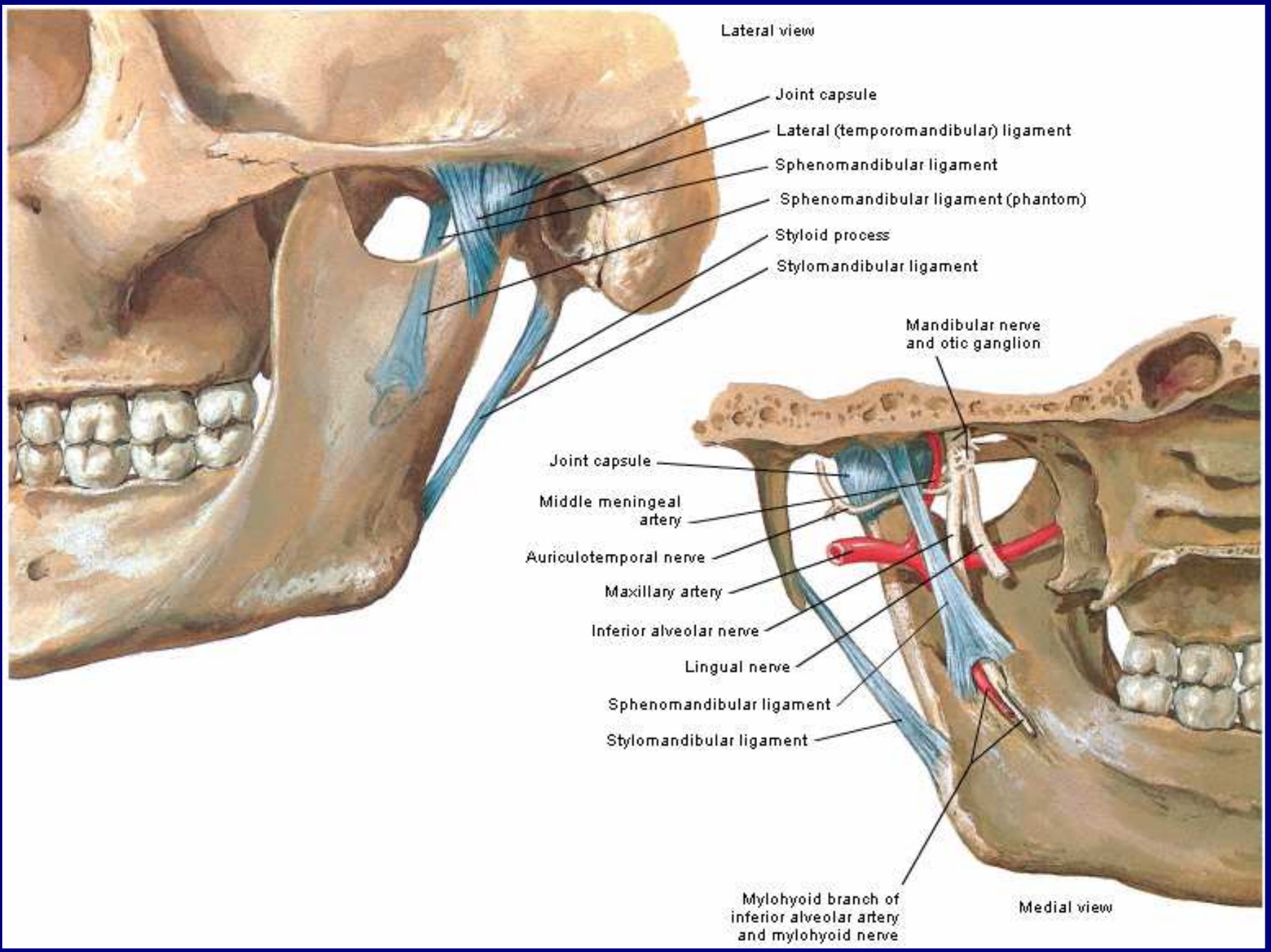
Deeper (accessory) part of tectorial membrane

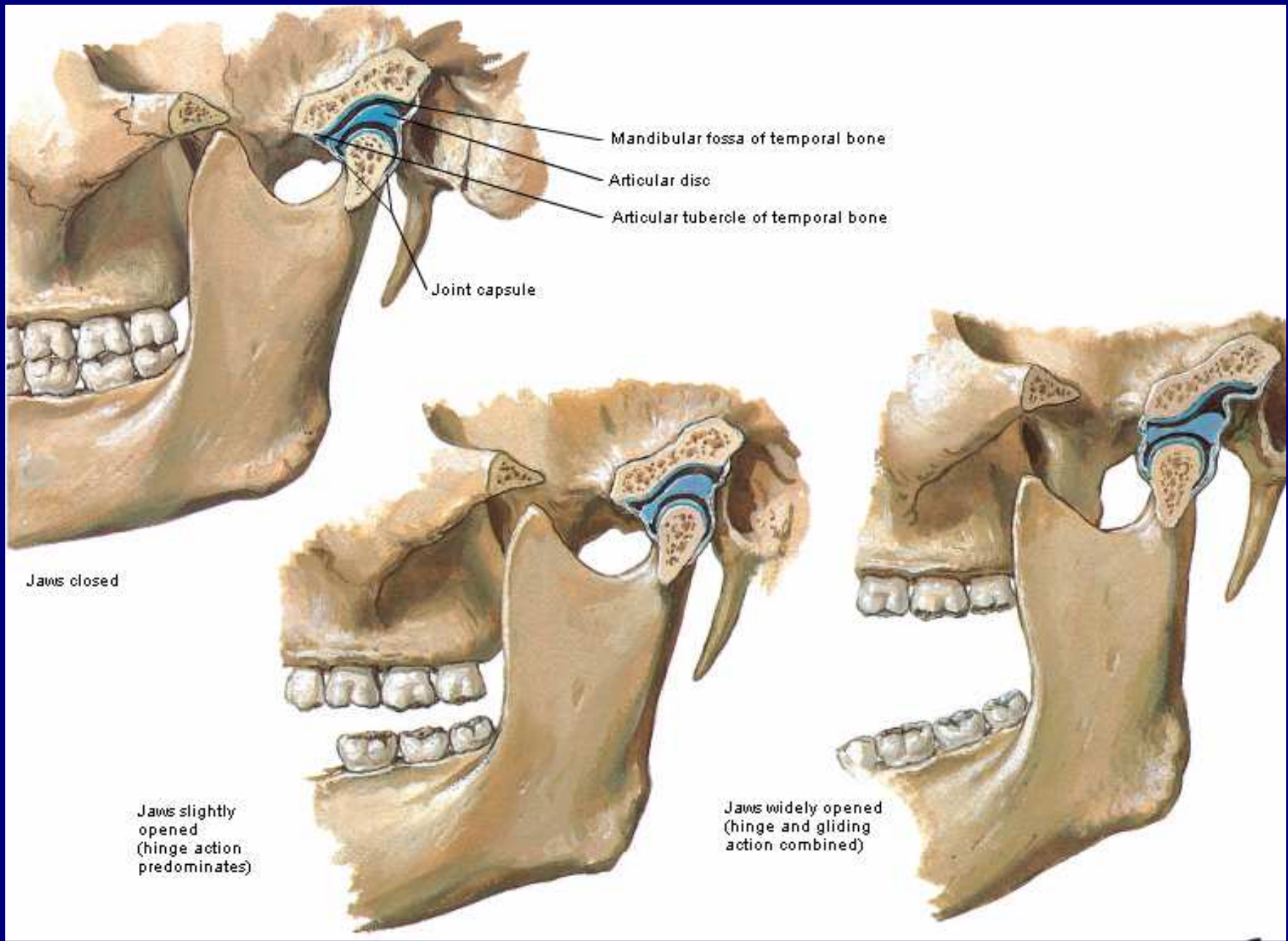


Atlas (C1)

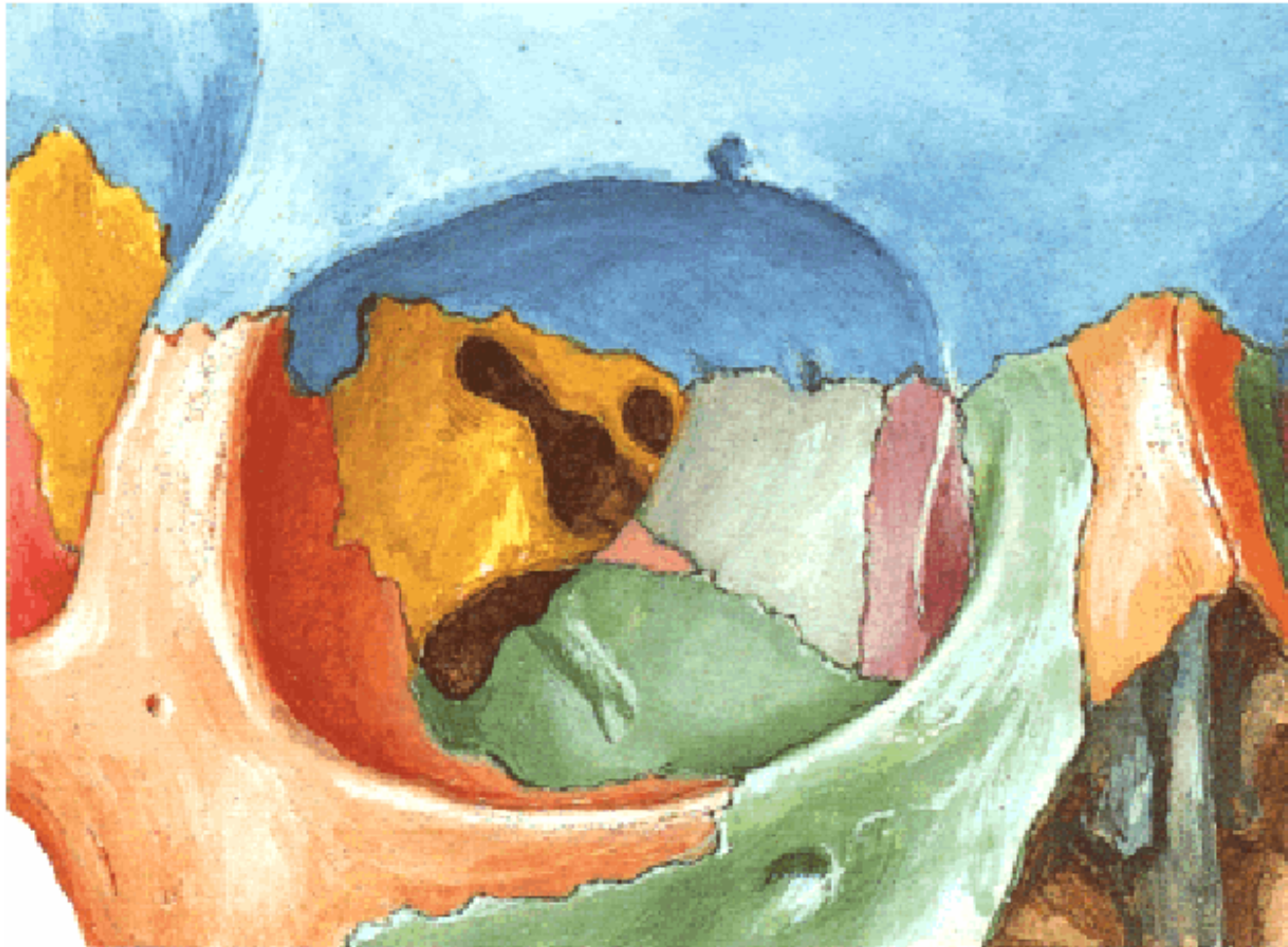
Axis (C2)

Principal part of tectorial membrane removed to expose deeper ligaments: posterior view





ORBITA



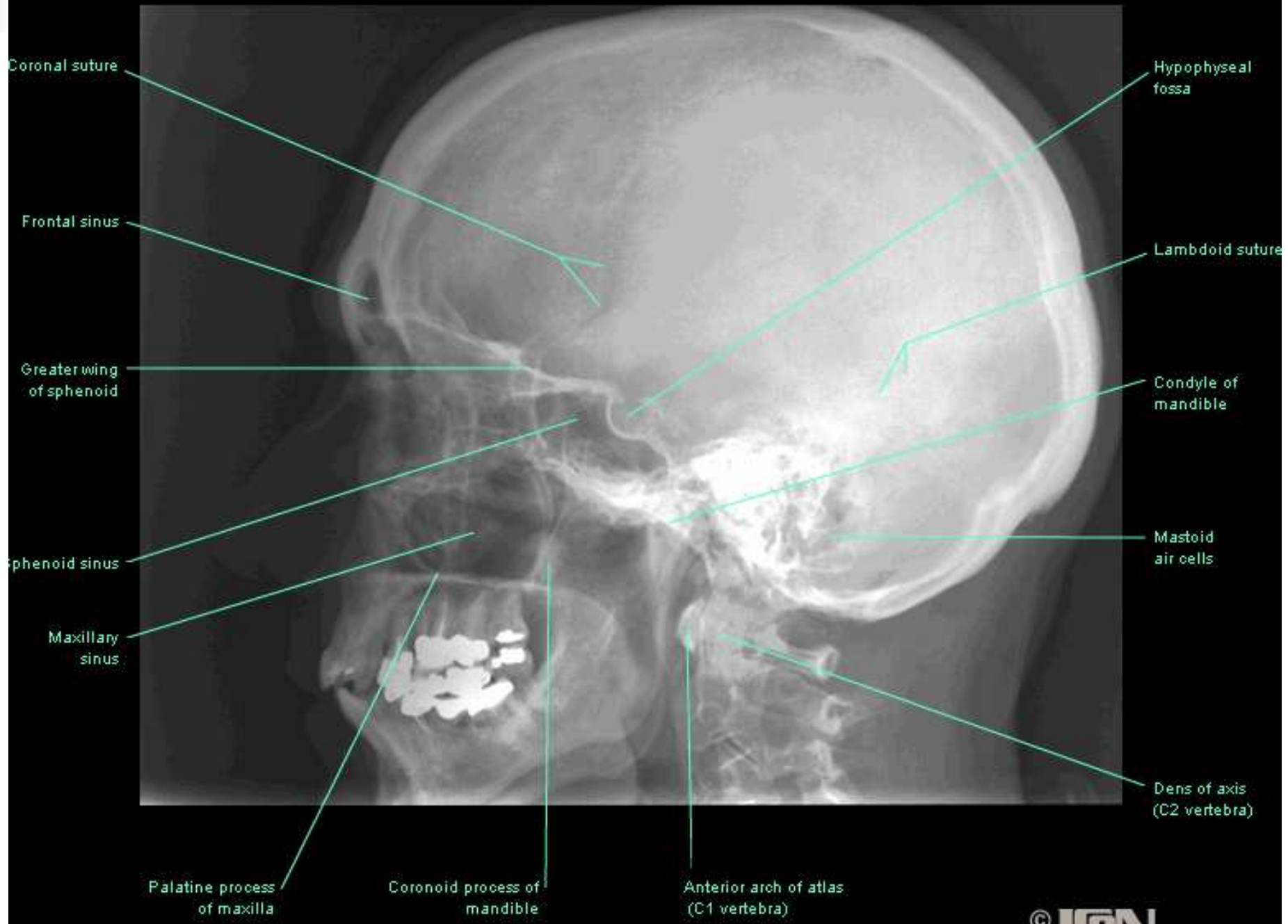
Dra. Ana V. Naranjo

TABIQUE NASAL

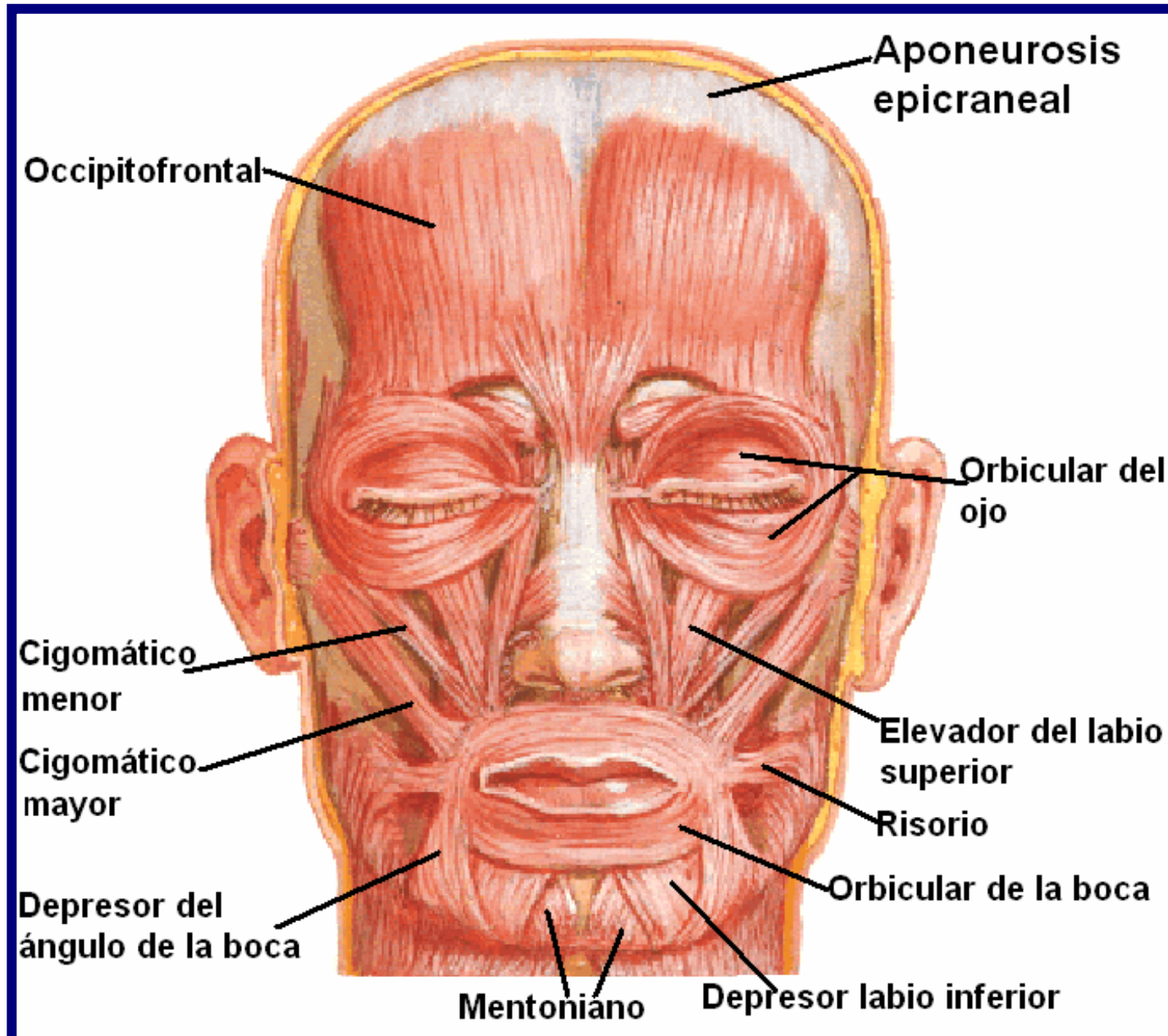


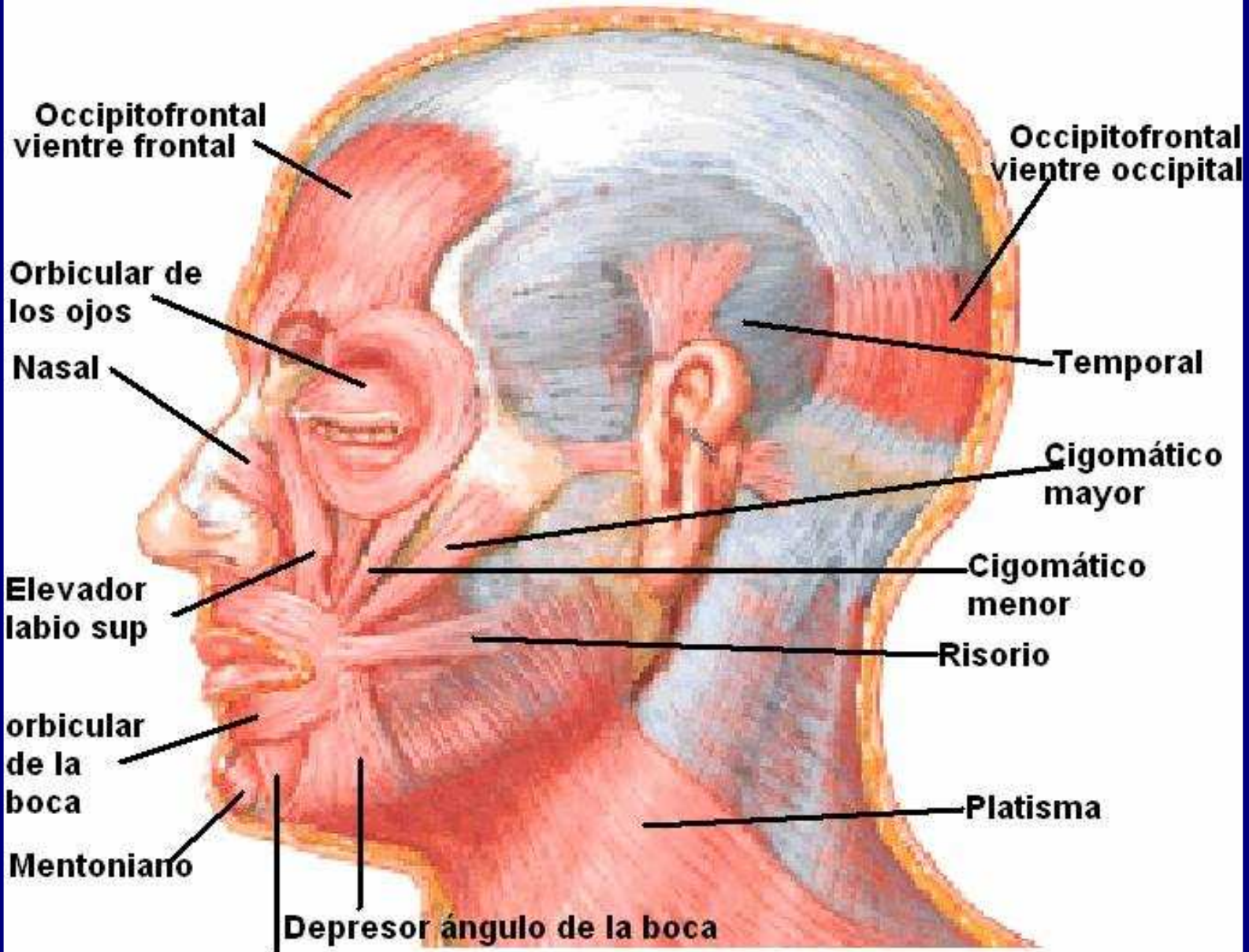
Dra. Ana V. Naranjo





EXPRESION FACIAL





**Occipitofrontal
vientre frontal**

**Occipitofrontal
vientre occipital**

**Orbicular de
los ojos**

Temporal

Nasal

**Cigomático
mayor**

**Elevador
labio sup**

**Cigomático
menor**

Risorio

**orbicular
de la
boca**

Platisma

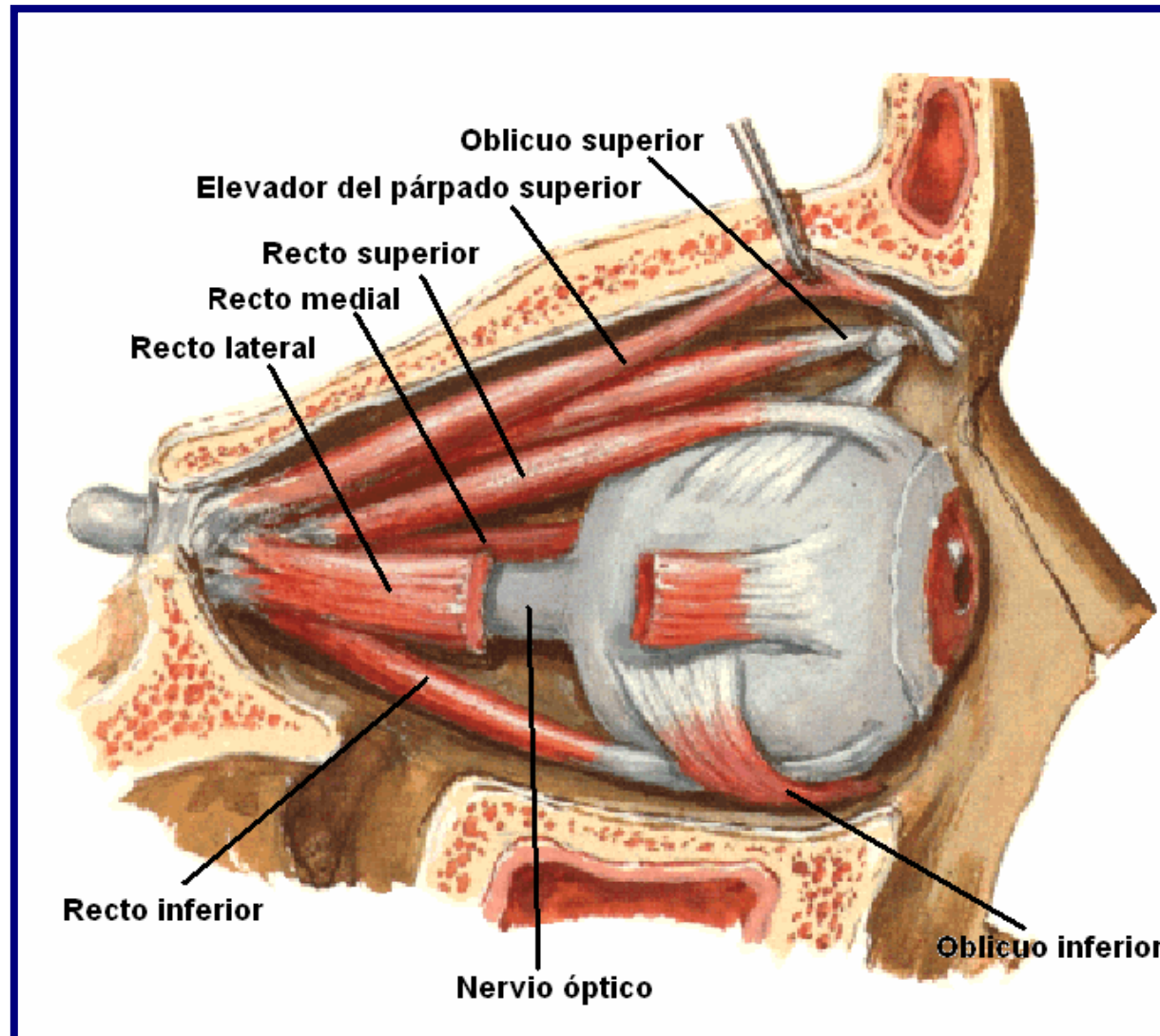
Mentoniano

Depresor ángulo de la boca

Depresor labio inferior

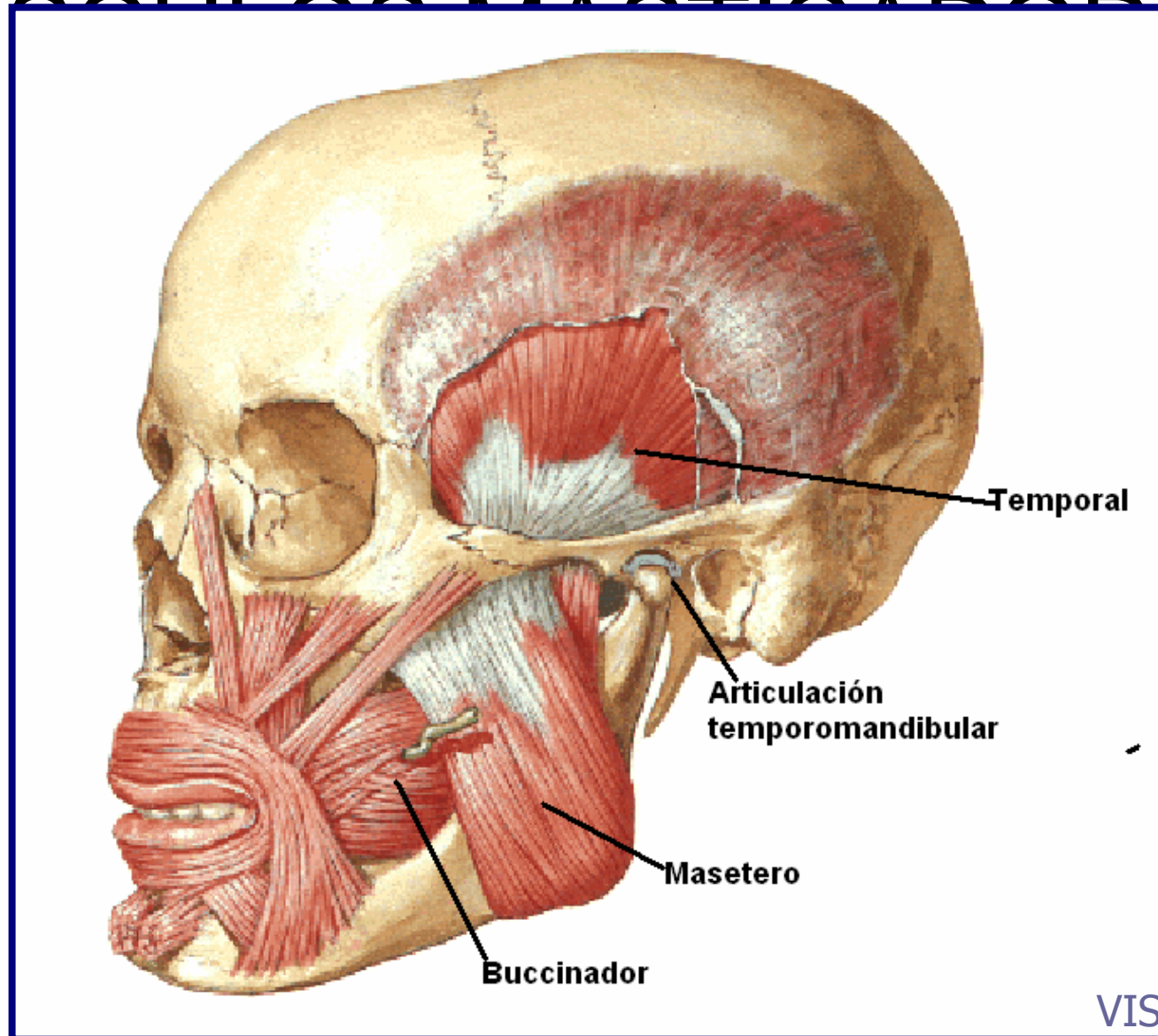
VISTA LATERAL

MÚSCULOS EXTRÍNSECOS DEL OJO



VISTA LATERAL

MÚSCULOS MASTICADORES



VISTA LATERAL

